

EKG Fundamentals

20yM with hx of asthma c/o severe substernal chest pain.
He thinks his father had his first MI at 48.

HR: 130	BP: 120/80
RR: 20	O2 Sat: 98%

What is your interpretation of the first EKG?

History/Clinical Picture

T Waves

Rate

U Waves

Rhythm

PR Interval

Axis

QRS Width

P Waves

ST Segment

Q/R/S Waves

QT Interval

First EKG Resource Links: [Life in the Fast Lane](#), [Dr. Steve Smith's Blog](#)

63yF with hx of CAD, ESRD on HD sent to the ED from
clinic for an abnormal EKG.

HR: 78	BP: 140/90
RR: 18	O2 Sat: 97%

What is your interpretation of the second EKG?

History/Clinical Picture

T Waves

Rate

U Waves

Rhythm

PR Interval

Axis

QRS Width

P Waves

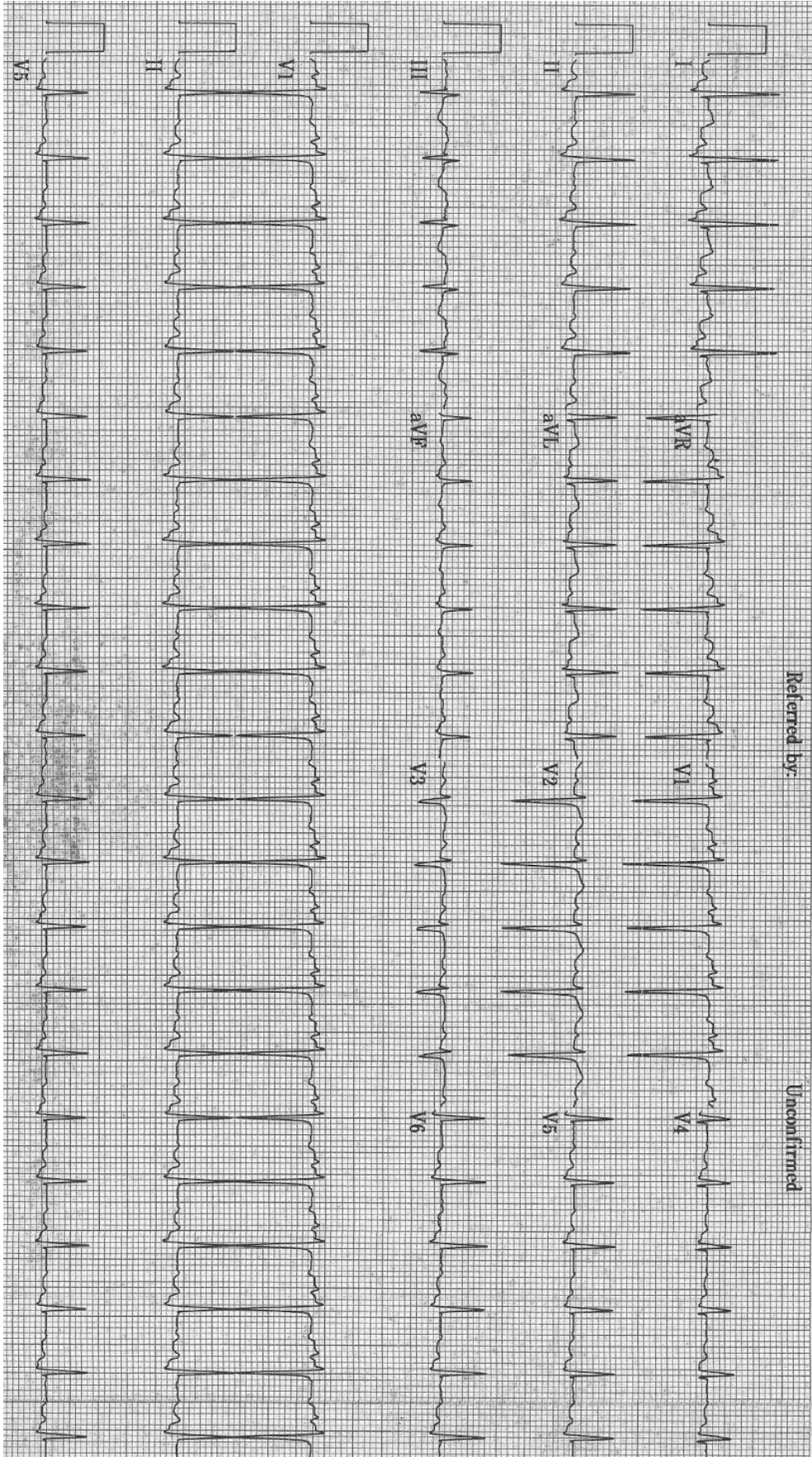
ST Segment

Q/R/S Waves

QT Interval

Second EKG Resource Links: [Life in the Fast Lane](#), [Dr. Steve Smith's Blog](#)

First Triage EKG



Second Triage EKG

