

EKG Fundamentals

36yM with HTN c/o intermittent CP that lasts for 3-4 hours at a time. No exertional pain, diaphoresis, family history of early MI/dissection. PERC negative.

HR: 84	BP: 160/90
RR: 16	O2 Sat: 100%

What is your interpretation of the first EKG?

History/Clinical Picture

T Waves

Rate

U Waves

Rhythm

PR Interval

Axis

QRS Width

P Waves

ST Segment

Q/R/S Waves

QT Interval

First EKG Resource Links: [Life in the Fast Lane](#), [Dr. Steve Smith's Blog](#)

57yF with a history of biliary colic, DM2, and SLE c/o of R arm pain, nausea, vomiting, and epigastric pain.

HR: 115	BP: 90/50
RR: 22	O2 Sat: 97%

What is your interpretation of the second EKG?

History/Clinical Picture

T Waves

Rate

U Waves

Rhythm

PR Interval

Axis

QRS Width

P Waves

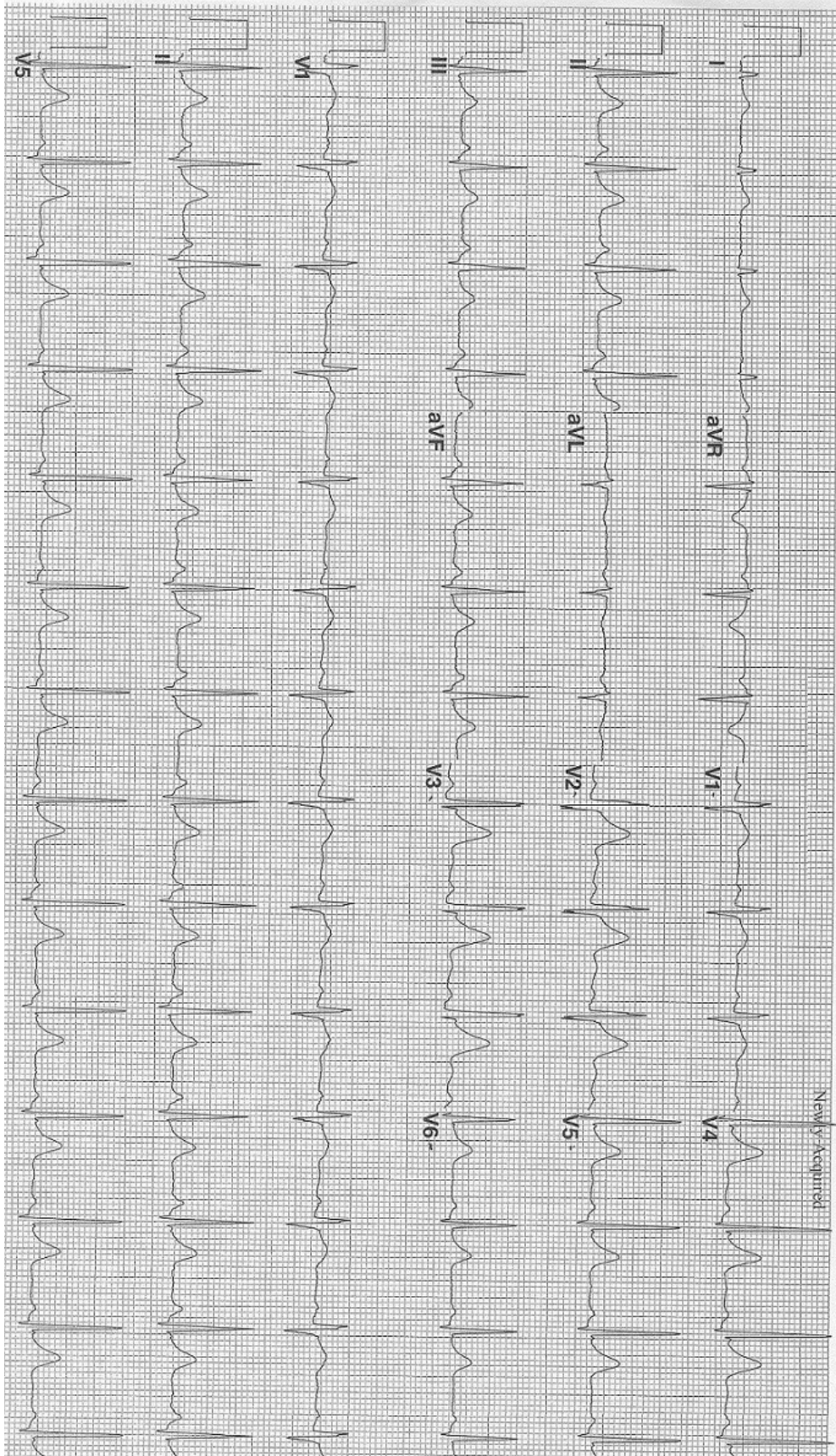
ST Segment

Q/R/S Waves

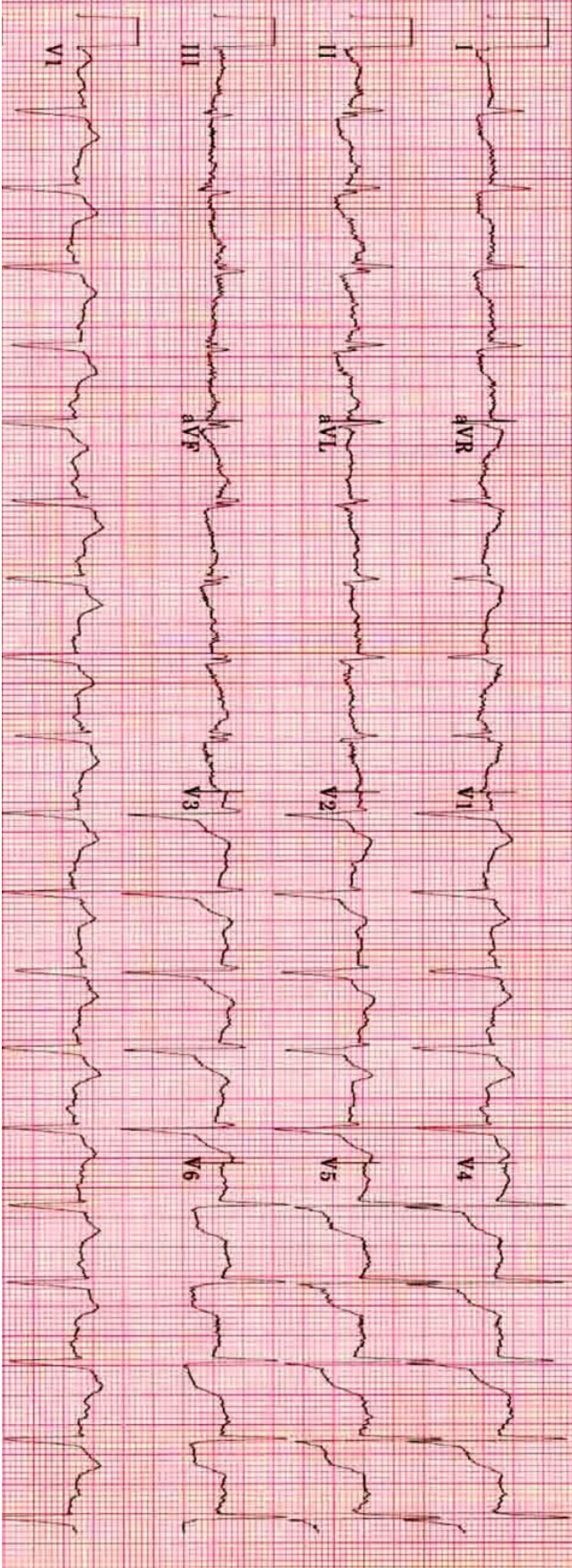
QT Interval

Second EKG Resource Links: [Life in the Fast Lane](#), [Dr. Steve Smith's Blog](#)

First Triage EKG



First Triage EKG



Courtesy of Edward Burns of [Life in the Fast Lane](#)

[Creative Commons License](#)