

EKG Fundamentals

70yM with history of CAD, HTN, HL presents after a syncopal episode while walking. An EKG from 1 year ago shows NSR with a right bundle branch block.

HR: 42	BP: 100/60
RR: 16	O2 Sat: 100%

What is your interpretation of the first EKG?

History/Clinical Picture

Rate

Rhythm

Axis

P Waves

Q/R/S Waves

T Waves

U Waves

PR Interval

QRS Width

ST Segment

QT Interval

First EKG Resource Links: [Life in the Fast Lane](#), [Dr. Ken Grauer's Blog](#)

EKG Fundamentals

86yM with history of HTN presents with complaint of lightheadedness. Denies chest pain or dyspnea.

HR: 42	BP: 90/50
RR: 16	O2 Sat: 99%

What is your interpretation of the second EKG?

History/Clinical Picture

Rate

Rhythm

Axis

P Waves

Q/R/S Waves

T Waves

U Waves

PR Interval

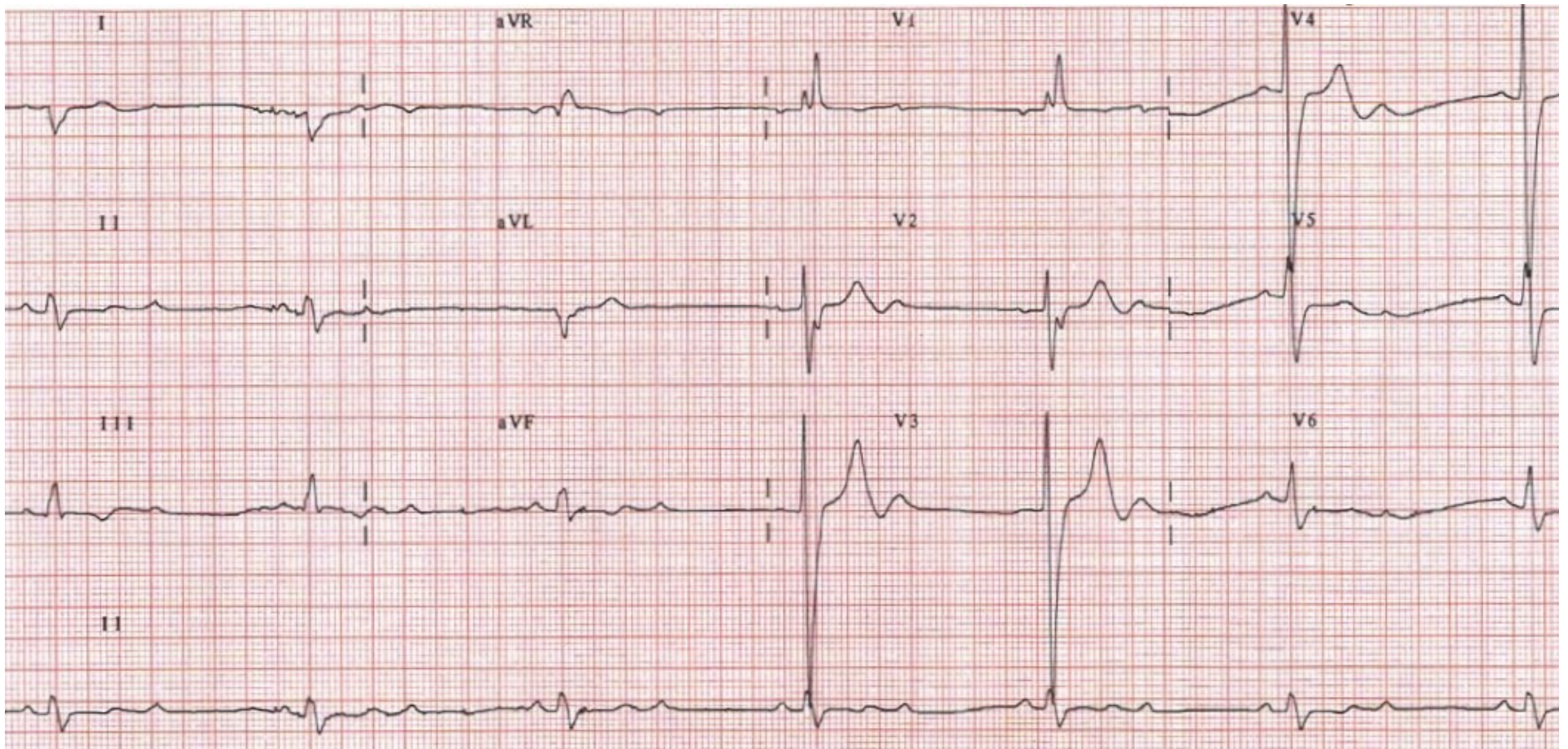
QRS Width

ST Segment

QT Interval

Second EKG Resource Links: [Life in the Fast Lane](#), [Dr. Steve Smith's Blog](#), [Dr. Ken Grauer's Blog](#)

Triage EKG #1



Courtesy of Edward Burns of [Life in the Fast Lane](#)

[Creative Commons License](#)

Triage EKG #2

