

# EM EKG Fundamentals

Patient 1: 48 year-old man with no known medical problems presenting with syncope

Patient 2: 48 year-old woman with no known medical problems presenting with pre-syncope

**Both patient's vitals:**

HR: 88      BP: 120/80  
RR: 12      O2 Sat: 100%

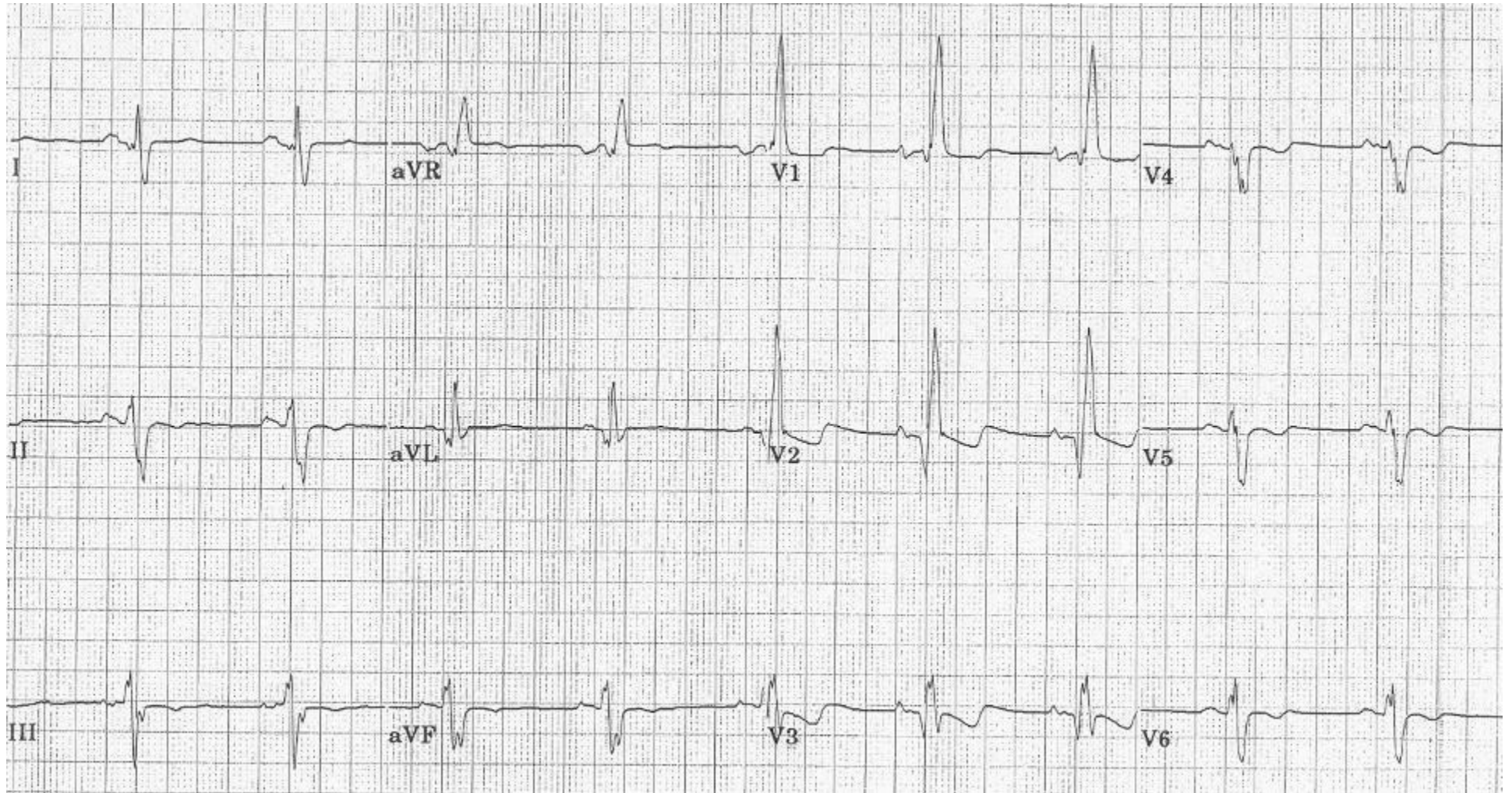
**What is your interpretation of Patient 1's EKG?**

- History/Clinical Picture
- Rate
- Rhythm
- Axis
- P Waves
- Q/R/S Waves
- U Waves
- T Waves
- PR Interval
- QRS Width
- ST Segment
- QT Interval

**What is your interpretation of Patient 2's EKG?**

- History/Clinical Picture
- Rate
- Rhythm
- Axis
- P Waves
- Q/R/S Waves
- U Waves
- T Waves
- PR Interval
- QRS Width
- ST Segment
- QT Interval

# Patient 1's EKG



## Patient 2's EKG

