

EM EKG Fundamentals

27 year-old woman with unknown history presents via ambulance after a worried friend called 911 for suicidality. Denies complaints on arrival. Patient became unresponsive while ED EKG completed.

HR: 120	BP: 80/40
RR: 18	O2 Sat: 97%

What is your interpretation of the EMS EKG?

History/Clinical Picture	U Waves
Rate	T Waves
Rhythm	PR Interval
Axis	QRS Width
P Waves	ST Segment
Q/R/S Waves	QT Interval

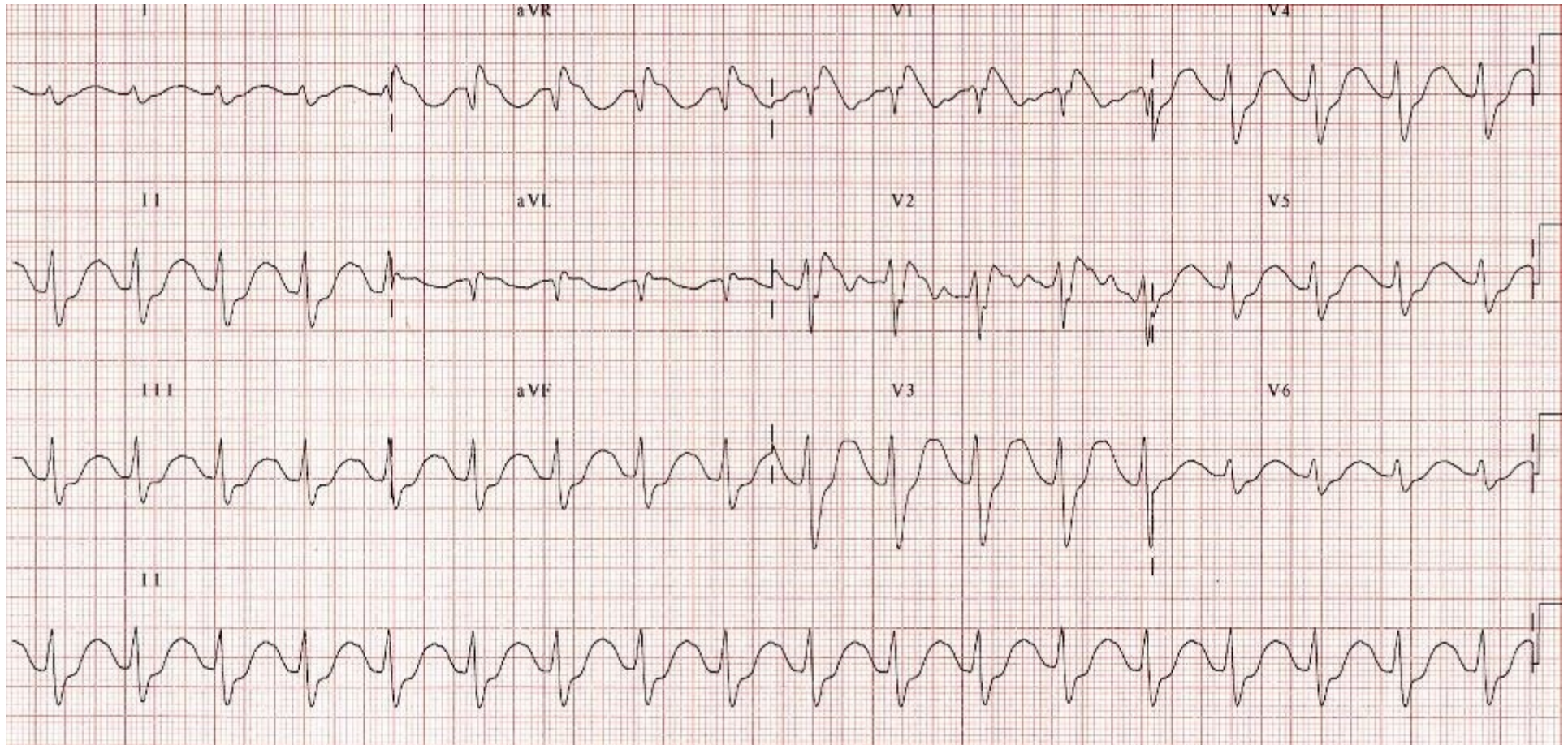
What is your interpretation of ED EKG?

History/Clinical Picture	U Waves
Rate	T Waves
Rhythm	PR Interval
Axis	QRS Width
P Waves	ST Segment
Q/R/S Waves	QT Interval

Resource Links: [Life in the Fast Lane](#)

[Dr. Steve Smith's Blog](#)

EMS EKG



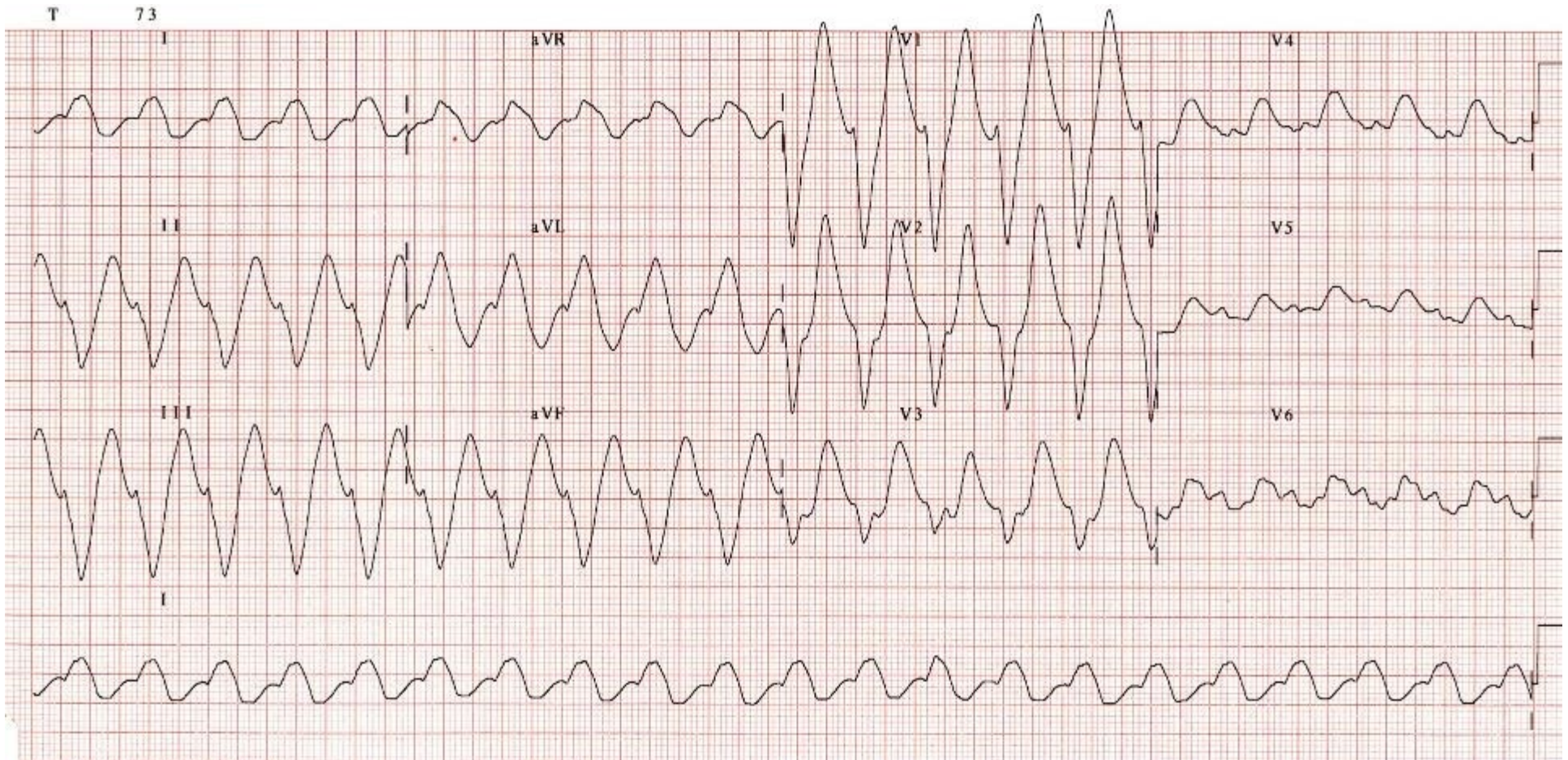
What are possible causes of this dysrhythmia?

What complications should you watch for?

Image Courtesy of Edward Burns of [Life in the Fast Lane](#)

[Creative Commons License](#)

Triage EKG



What treatment options do you have for this patient?

*Image Courtesy of Edward Burns of [Life in the Fast Lane](#)
[Creative Commons License](#)*