

Foundations EKG I - Unit 4, Case 13

59y/o F with PMH of HTN presents from her PCP for an abnormal ECG. She reports feeling asymptomatic. She was recently started on carvedilol by her primary care physician for her blood pressure.

HR: 66	BP: 140/90
RR: 12	O2 Sat: 100%

What is your interpretation of the EKG?

History/Clinical Picture

Rate

Rhythm

Axis

P Waves

Q/R/S Waves

T Waves

U Waves

PR Interval

QRS Width

ST Segment

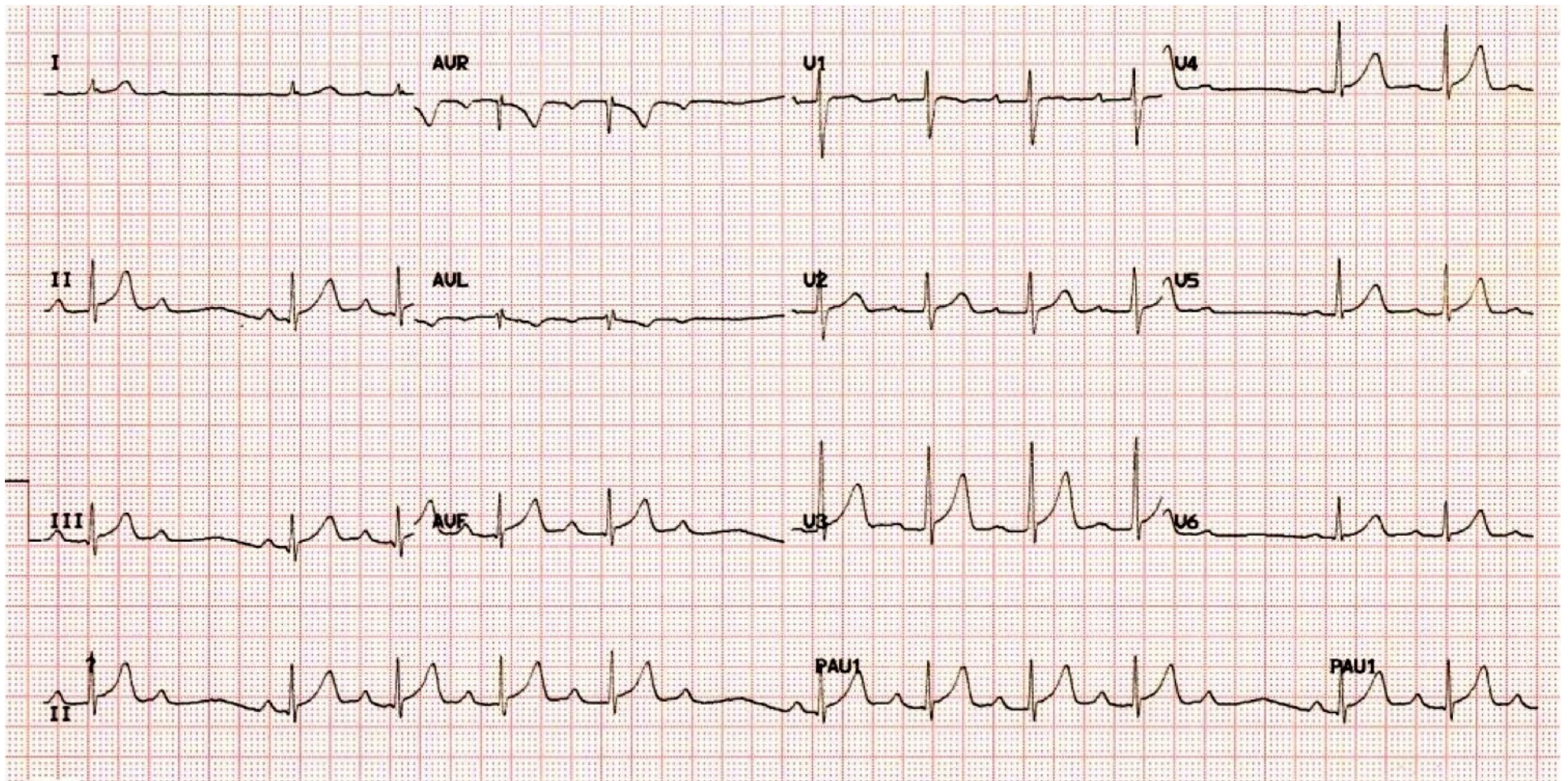
QT Interval

What is your diagnosis based on the history and ECG findings?

Are there any therapies that you would initiate in the ED?

How would you disposition this patient?

Triage EKG



Courtesy of Edward Burns of [Life in the Fast Lane](#)

[Creative Commons License](#)