

# Foundations EKG - Unit 4, Case 14

*70yM with history of CAD, HTN, HL presents after a syncopal episode while walking. An EKG from 1 year ago shows NSR with a right bundle branch block.*

HR: 42	BP: 100/60
RR: 16	O2 Sat: 100%

## What is your interpretation of the EKG?

History/Clinical Picture

Rate

Rhythm

Axis

P Waves

Q/R/S Waves

T Waves

U Waves

PR Interval

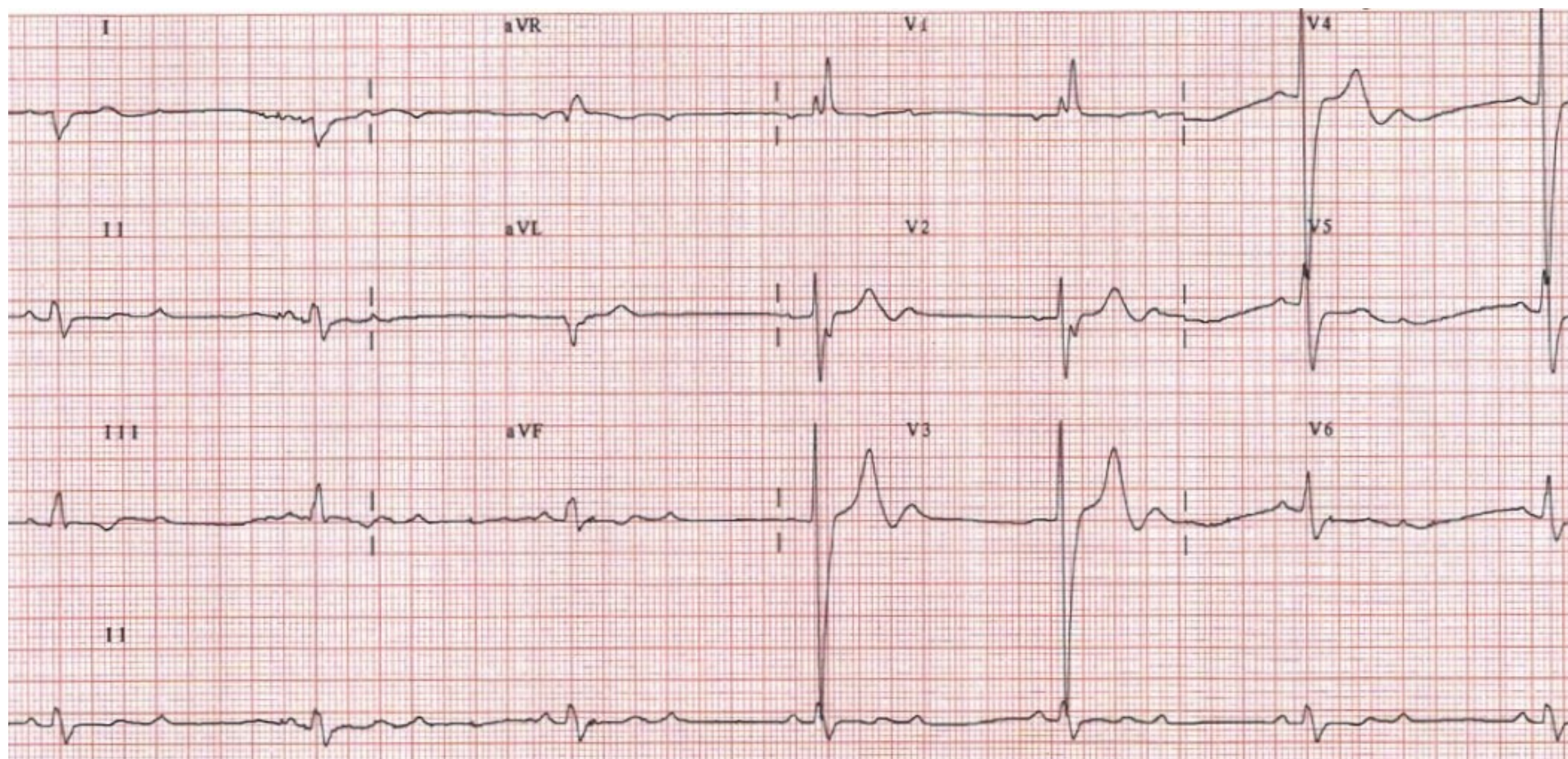
QRS Width

ST Segment

QT Interval

## What is the definitive treatment for this patient?

# Triage EKG



Courtesy of Edward Burns of [Life in the Fast Lane](#)

[Creative Commons License](#)