

Foundations EKG I - Unit 5, Case 19

44 y/o M with a history of a “heart problem” for which he has been “shocked” before, and for which he takes rivaroxaban, presents for palpitations.

HR: 150 BP: 120/86

RR: 14 O2 Sat: 99%

What is your interpretation of the EKG?

History/Clinical Picture

Rate

Rhythm

Axis

P Waves

Q/R/S Waves

T Waves

U Waves

PR Interval

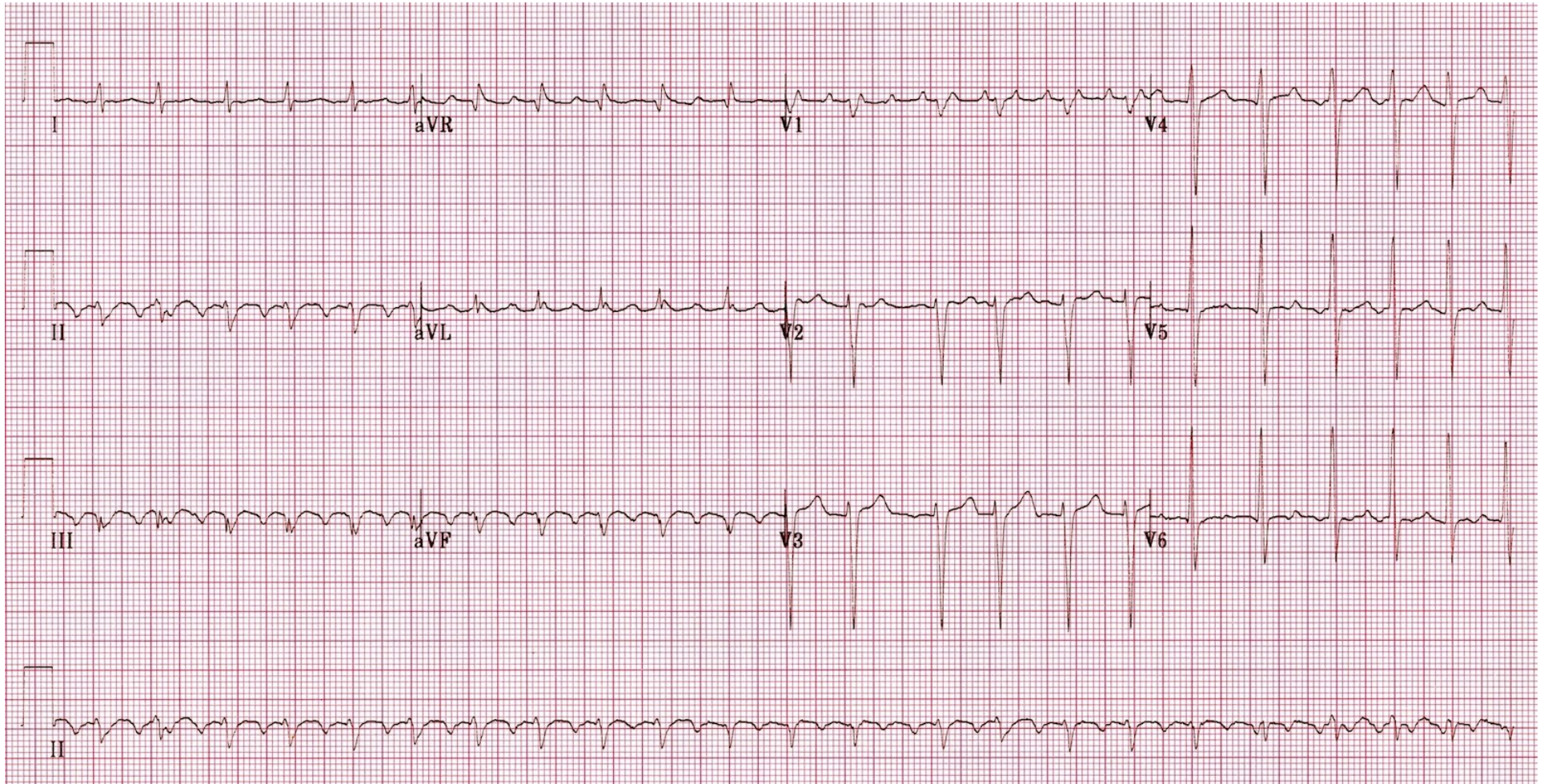
QRS Width

ST Segment

QT Interval

What are your management options for this patient?

Triage EKG



Courtesy of Edward Burns of [Life in the Fast Lane](#)

[Creative Commons License](#)