

# Foundations EKG I - Unit 6, Case 23

*55 y/o F with a PMH of myasthenia gravis undergoes intubation for respiratory failure. The following EKG is taken immediately after successful induction and intubation.*

HR: 70	BP: 95/45
RR: 12	O2 Sat: 100%

## What is your interpretation of the EKG?

History/Clinical Picture

Rate

Rhythm

Axis

P Waves

Q/R/S Waves

T Waves

U Waves

PR Interval

QRS Width

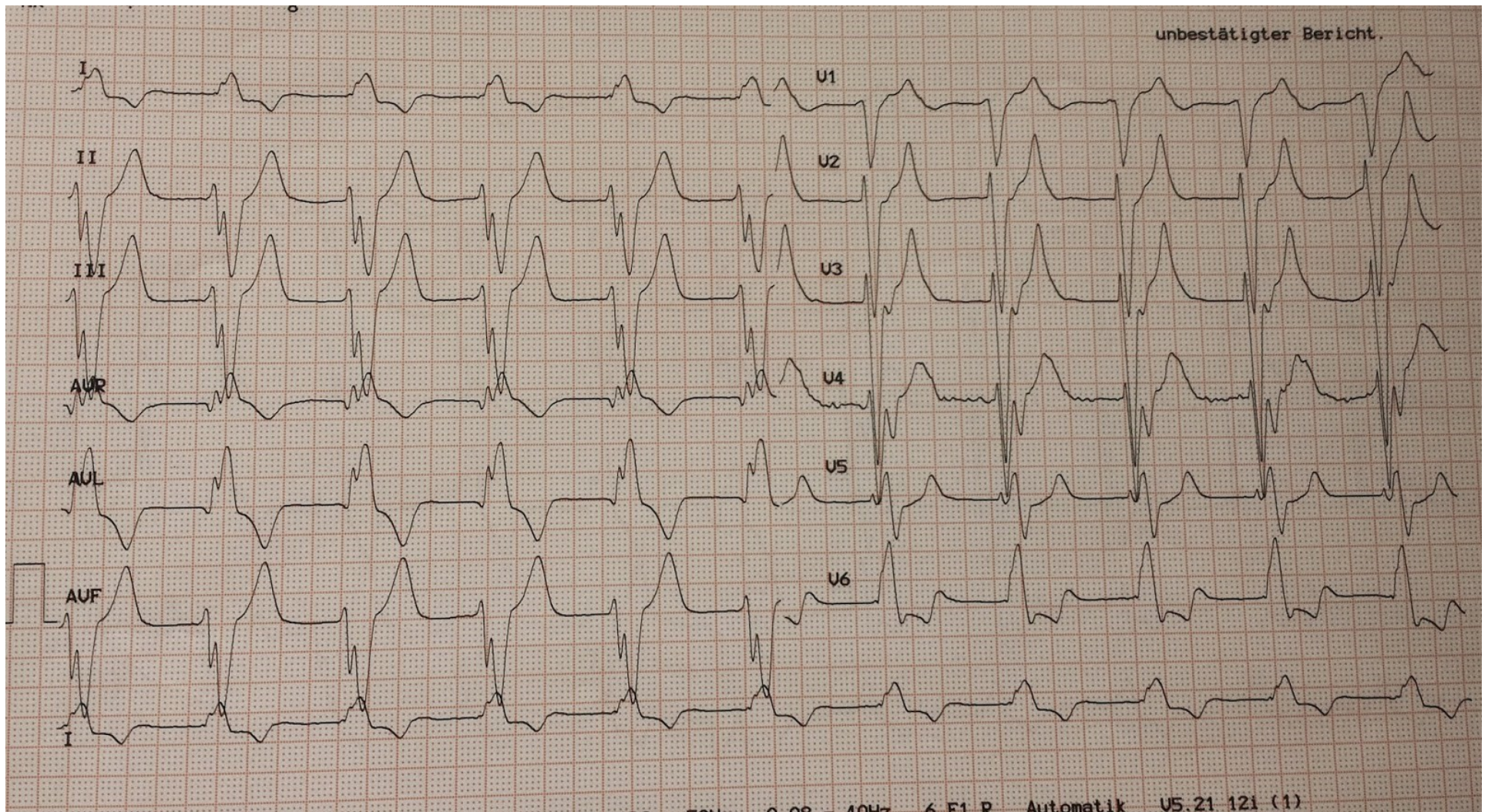
ST Segment

QT Interval

**How would you manage this in the ED?**

**What medication likely precipitated this situation?**

# Post-Intubation EKG



Courtesy of Steve Smith of [Dr. Smith's ECG Blog](#)