

# Foundations EKG I - Unit 6, Case 24

*27 year-old woman with unknown history presents via ambulance after a worried friend called 911 for suicidality. Denies complaints on arrival. Patient became unresponsive while ED triage EKG completed.*

HR: 120	BP: 80/40
RR: 18	O2 Sat: 97%

## What is your interpretation of the Triage EKG?

History/Clinical Picture

Rate

Rhythm

Axis

P Waves

Q/R/S Waves

T Waves

U Waves

PR Interval

QRS Width

ST Segment

QT Interval

**What aspects of the EKG changed significantly when it was repeated?**

**What are possible causes of this dysrhythmia?**

**What complications should you watch for?**

**What treatment options do you have for this patient?**

# Pre-Hospital EMS EKG

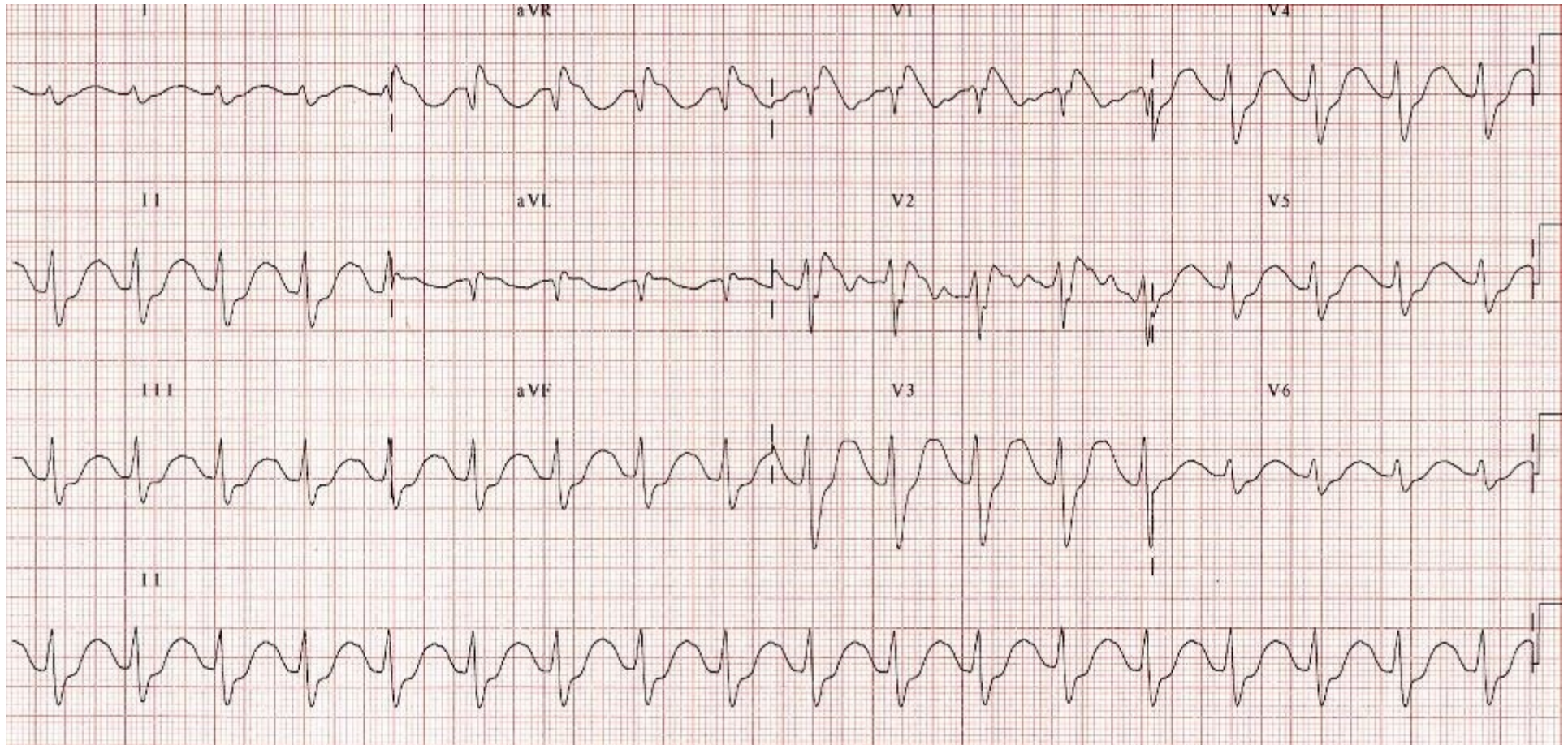


Image Courtesy of Edward Burns of [Life in the Fast Lane](#)  
[Creative Commons License](#)

# ED Triage EKG

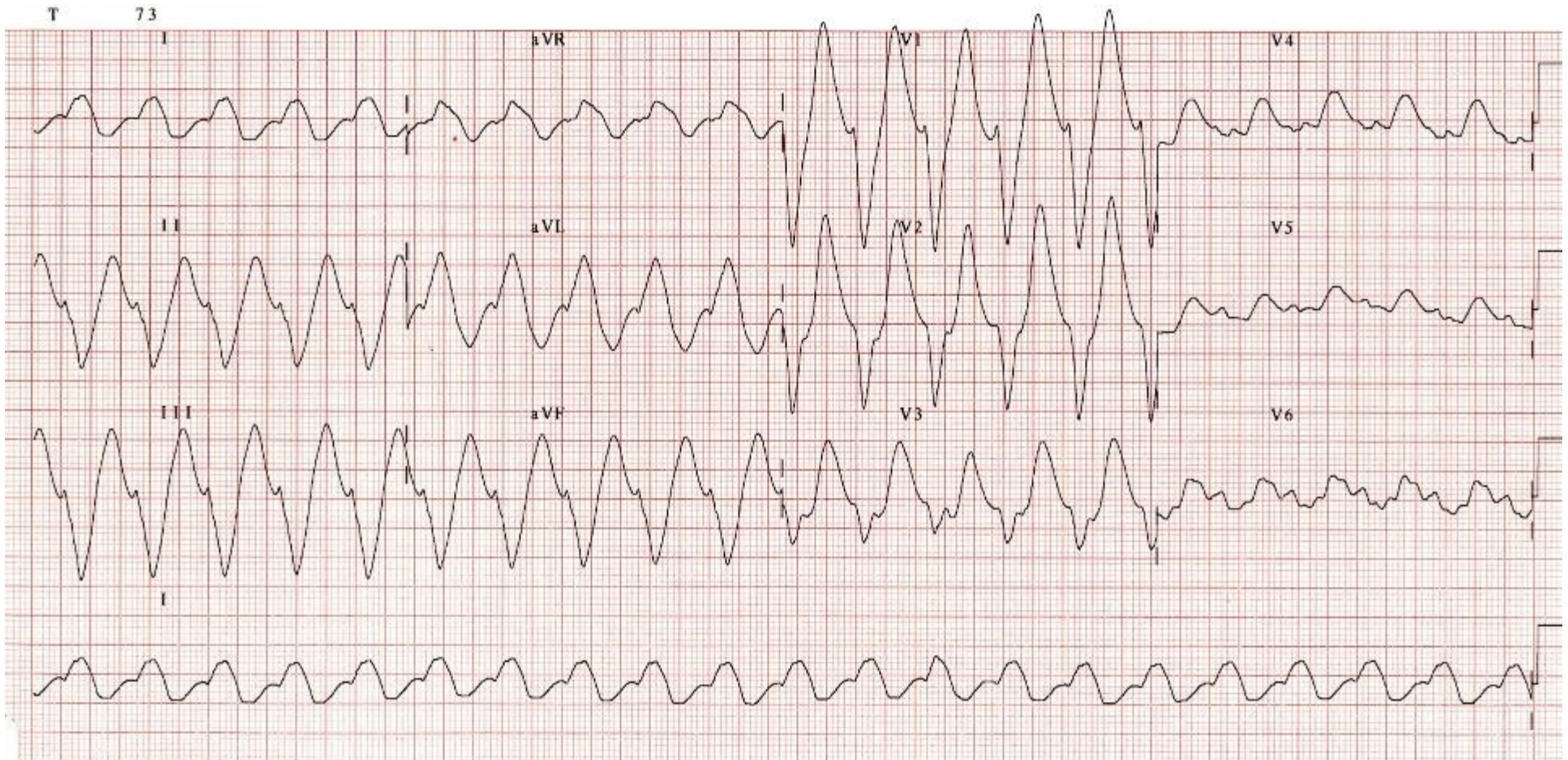


Image Courtesy of Edward Burns of [Life in the Fast Lane](#)  
[Creative Commons License](#)