



Foundations EKG II - Unit 8, Case 29

51 y/o F with PMH of SLE presents via EMS following a PEA arrest while running a marathon. She was intubated in the field and received three rounds of CPR and epinephrine before ROSC.

HR: 115 BP: 90/50

RR: 12 O2 Sat: 99%

What is your interpretation of the EKG?

History/Clinical Picture

Rate

Rhythm

Axis

P Waves

Q/R/S Waves

T Waves

U Waves

PR Interval

QRS Width

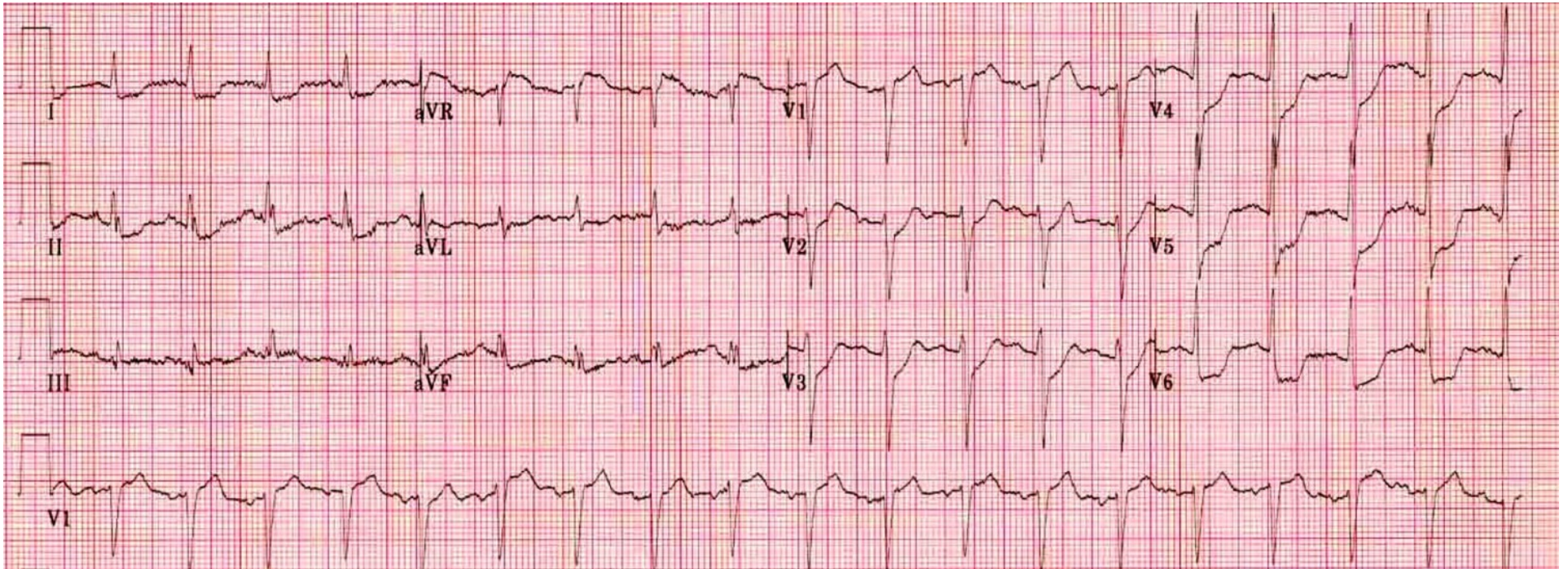
ST Segment

QT Interval

What is your differential diagnosis for these EKG findings?

How would you manage this patient in the ED?

Triage EKG



Courtesy of Edward Burns of [Life in the Fast Lane](#)

[Creative Commons License](#)