

# Foundations EKG II - Unit 10, Case 38

*63 y/o M with PMH of HTN, HL, and BPH presents for nausea, suprapubic discomfort, and inability to urinate for 2 days.*

HR: 76      BP: 145/88

RR: 14      O2 Sat: 96%

## **What is your interpretation of the EKG?**

History/Clinical Picture

Rate

Rhythm

Axis

P Waves

Q/R/S Waves

T Waves

U Waves

PR Interval

QRS Width

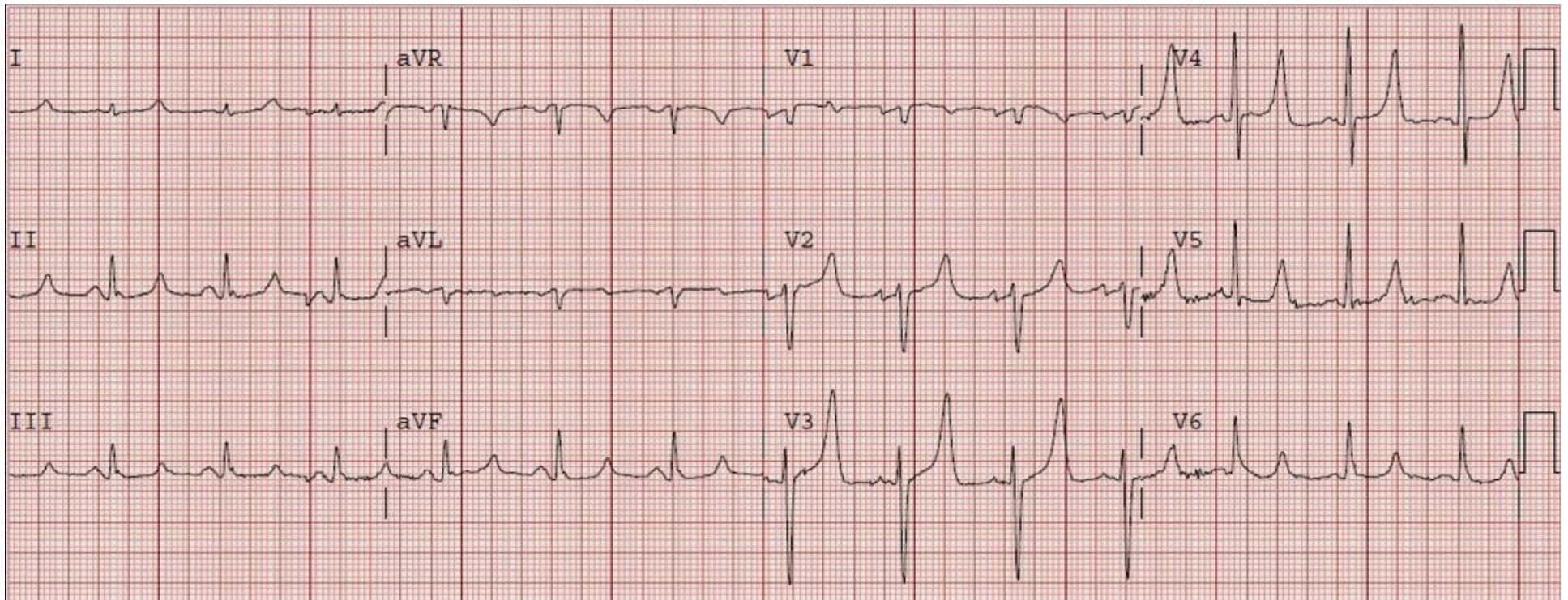
ST Segment

QT Interval

**Putting the EKG together with the clinical history, what do you think is going on with this patient?**

**How would you manage this patient in the ED?**

# Triage EKG



Courtesy of Steve Smith of [Dr. Smith's ECG Blog](#)

[Creative Commons License](#)