

Foundations EKG II - Unit 12, Case 47

63 y/o M with PMH of heart failure with preserved EF (HFpEF) and second degree type 2 AV block s/p pacemaker placement presents for sudden onset of palpitations and dyspnea.

HR: 120 BP: 105/80

RR: 18 O2 Sat: 96%

What is your interpretation of the EKG?

History/Clinical Picture

Rate

Rhythm

Axis

P Waves

Q/R/S Waves

T Waves

U Waves

PR Interval

QRS Width

ST Segment

QT Interval

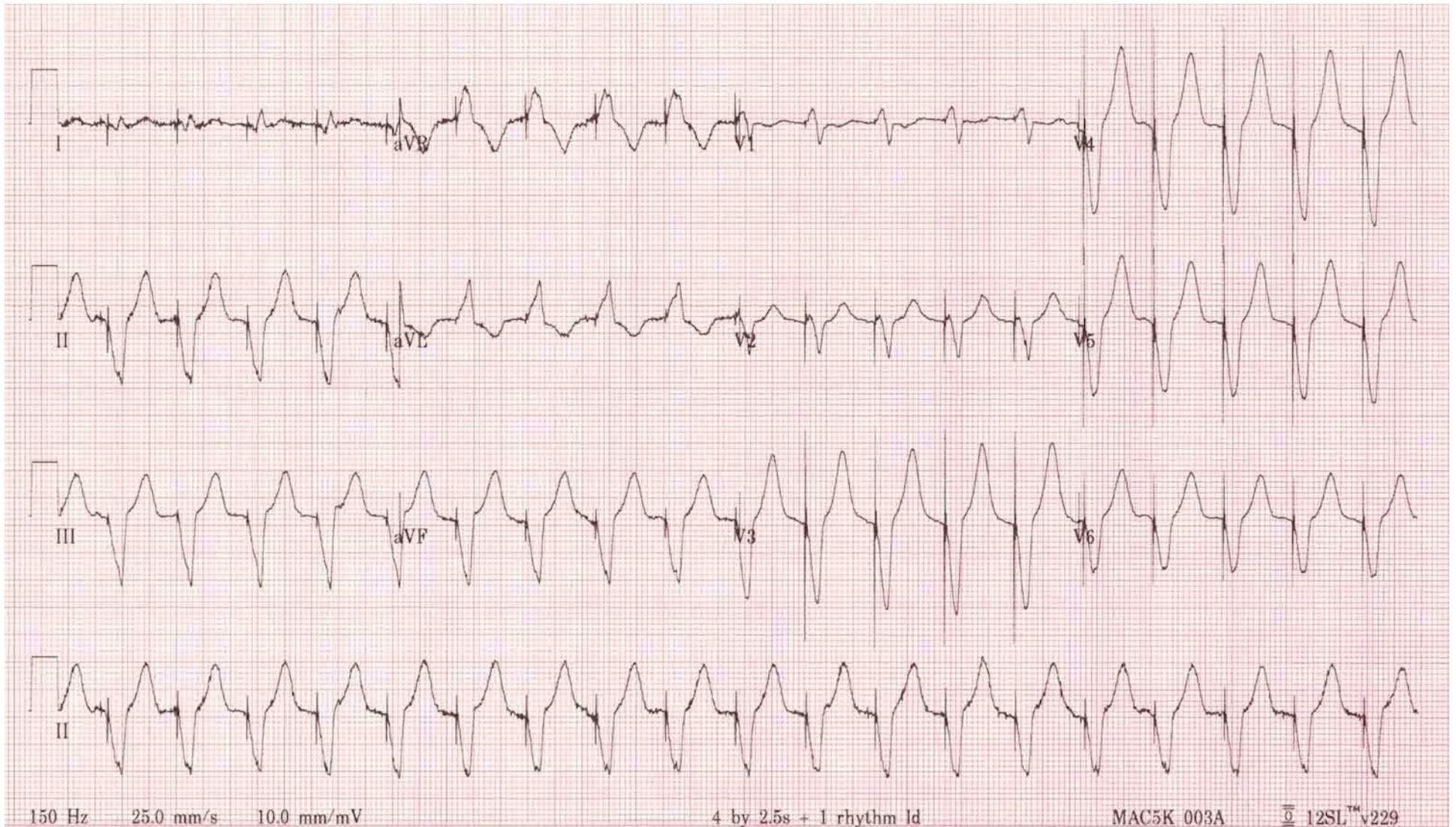
What is your differential diagnosis for these EKG findings?

How would you manage this patient in the ED?

How could you treat this patient if her symptoms didn't spontaneously resolve?

**What happens when you place a magnet on a pacemaker?
An AICD?**

Triage EKG



Courtesy of Edward Burns of [Life in the Fast Lane](#)

[Creative Commons License](#)