

# Foundations EKG II - Unit 12, Case 48

*77 y/o F with PMH of HTN, CAD, and complete heart block s/p pacemaker placement presents for persistent presyncope beginning 30 minutes after a fall down the stairs.*

HR: 42      BP: 130/92

RR: 18      O2 Sat: 99%

## What is your interpretation of the EKG?

History/Clinical Picture

Rate

Rhythm

Axis

P Waves

Q/R/S Waves

T Waves

U Waves

PR Interval

QRS Width

ST Segment

QT Interval

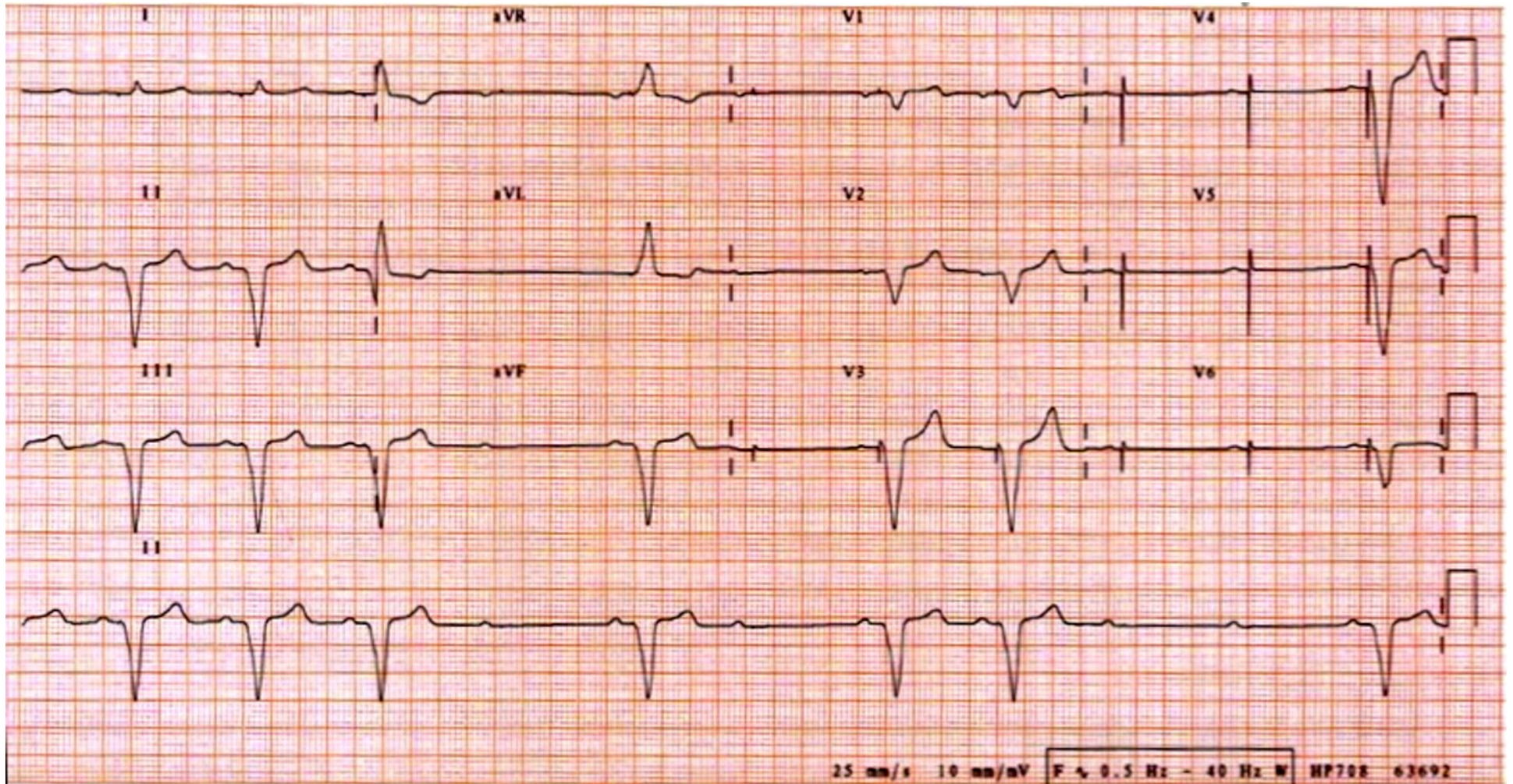
**What is the rhythm?**

**Can you tell which chambers of the heart are being paced?**

**Are there any signs of pacemaker malfunction?**

**How would you manage this patient in the ED?**

# Triage EKG



Courtesy of Edward Burns of [Life in the Fast Lane](#)

[Creative Commons License](#)