

# Foundations EKG I - Unit 3, Case 12



*16 yoF with no known PMH presents for chest pain, palpitations and pre-syncope with exertion that has been worsening over the last 3 months. On exam she has a 3/6 systolic murmur.*

HR: 75      BP: 100/60

RR: 14      O2 Sat: 99%

## What is your interpretation of the EKG?

History/Clinical Picture

Rate

Rhythm

Axis

P Waves

Q/R/S Waves

T Waves

U Waves

PR Interval

QRS Width

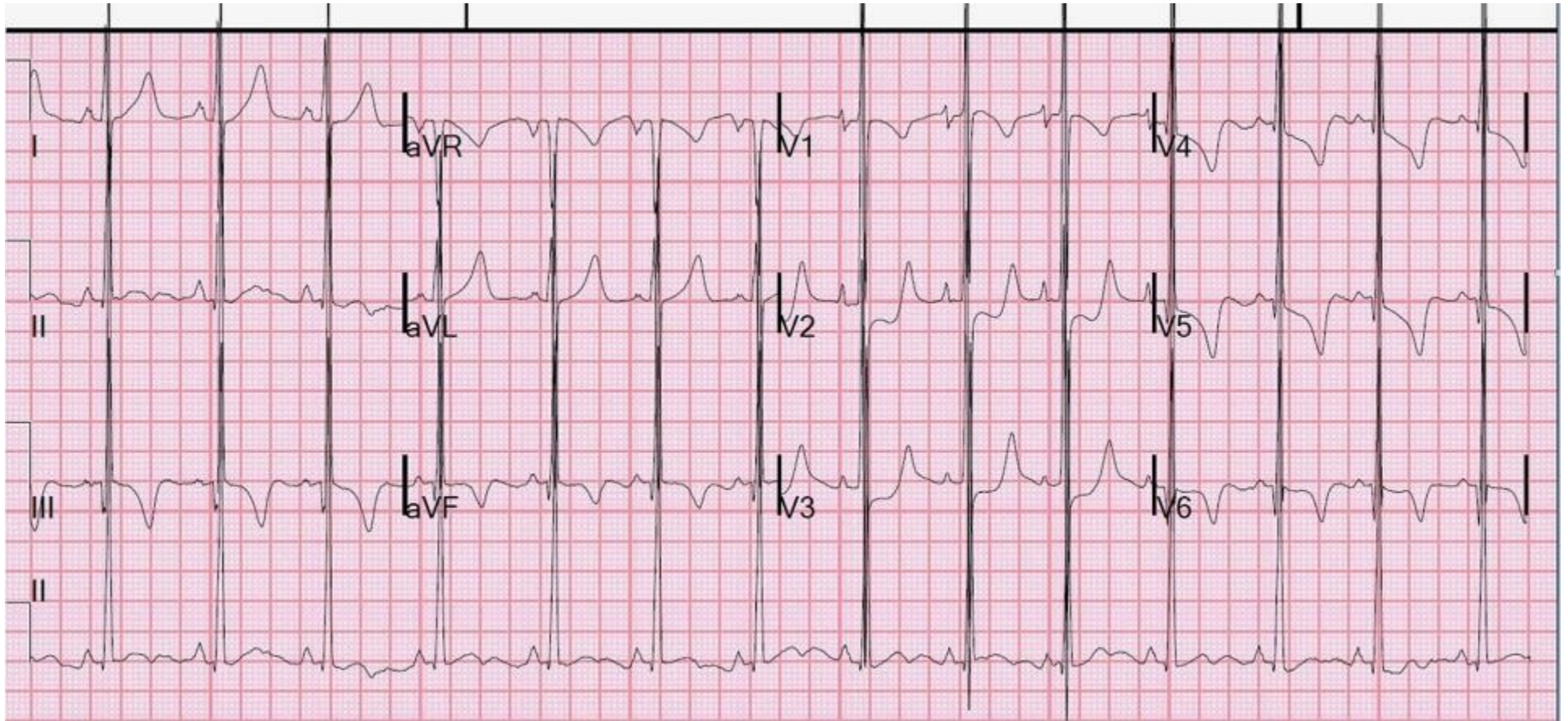
ST Segment

QT Interval

**Putting the clinical situation together with the ECG findings, what do you think is going on with this patient?**

**How would you manage and disposition this patient?**

# Triage EKG—Unit 3, Case 12



Courtesy of Steve Smith of [Dr. Smith's ECG Blog](#)