

Foundations EKG - Unit 4, Case 14



70yM with history of CAD, HTN, HL presents after a syncopal episode while walking. An EKG from 1 year ago shows NSR with a right bundle branch block.

HR: 42	BP: 100/60
RR: 16	O2 Sat: 100%

What is your interpretation of the EKG?

History/Clinical Picture

Rate

Rhythm

Axis

P Waves

Q/R/S Waves

T Waves

U Waves

PR Interval

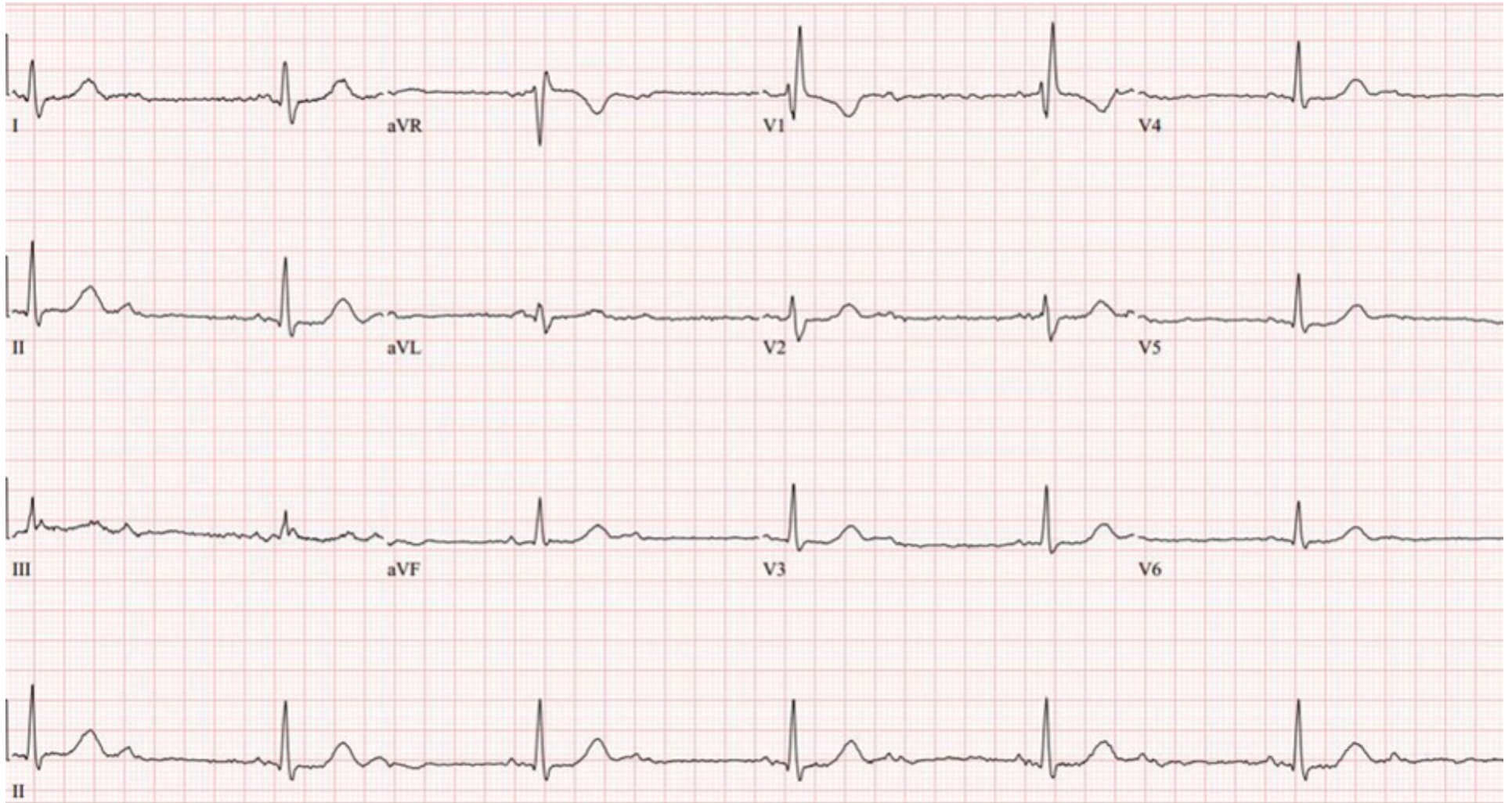
QRS Width

ST Segment

QT Interval

What is the definitive treatment for this patient?

Triage EKG—Unit 4, Case 14



EKG courtesy of Shanna Jones, MD