

Foundations EKG I - Unit 6, Case 23



55 y/o F with a PMH of myasthenia gravis undergoes intubation for respiratory failure. The following EKG is taken immediately after successful induction and intubation.

HR: 70	BP: 90/50
RR: 12	O2 Sat: 100%

What is your interpretation of the EKG?

History/Clinical Picture

Rate

Rhythm

Axis

P Waves

Q/R/S Waves

T Waves

U Waves

PR Interval

QRS Width

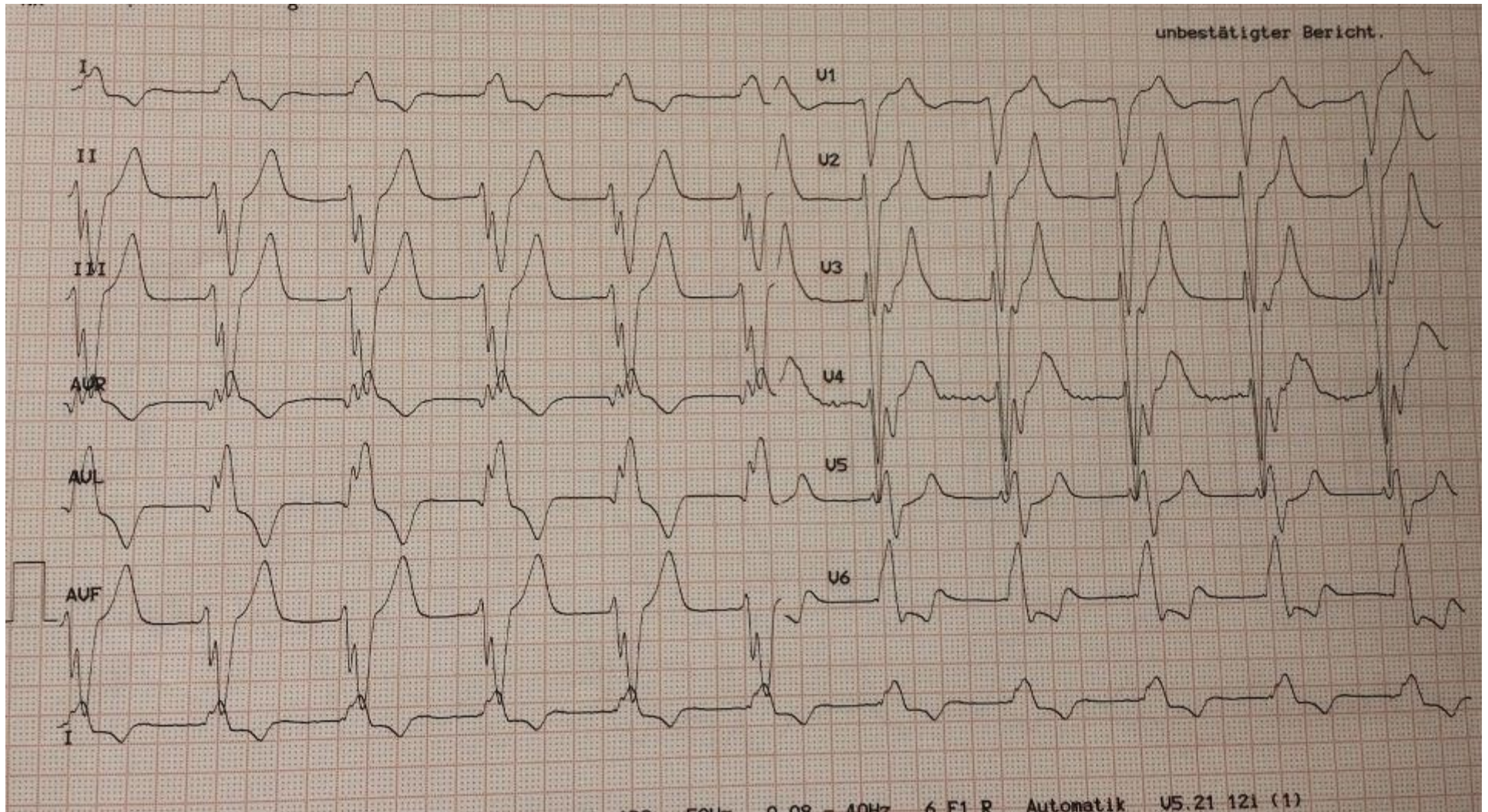
ST Segment

QT Interval

How would you manage this in the ED?

What medication likely precipitated this situation?

Triage EKG—Unit 6, Case 23



Courtesy of Steve Smith of [Dr. Smith's ECG Blog](#)