

Foundations EKG II - Unit 7, Case 25



Patient 1—35yM with no PMHx presenting with palpitations.

HR: 65 BP: 110/70 RR: 22 O2 Sat: 97%

Patient 2—45yM with no PMHx presenting with chest pain.

HR: 70 BP: 110/70 RR: 22 O2 Sat: 97%

What is your interpretation of EKG 1?

History/Clinical Picture

Rate

Rhythm

Axis

P Waves

Q/R/S Waves

T Waves

U Waves

PR Interval

QRS Width

ST Segment

QT Interval

What dangerous conditions may be associated with palpitations?

What is your interpretation of EKG 2?

History/Clinical Picture

Rate

Rhythm

Axis

P Waves

Q/R/S Waves

T Waves

U Waves

PR Interval

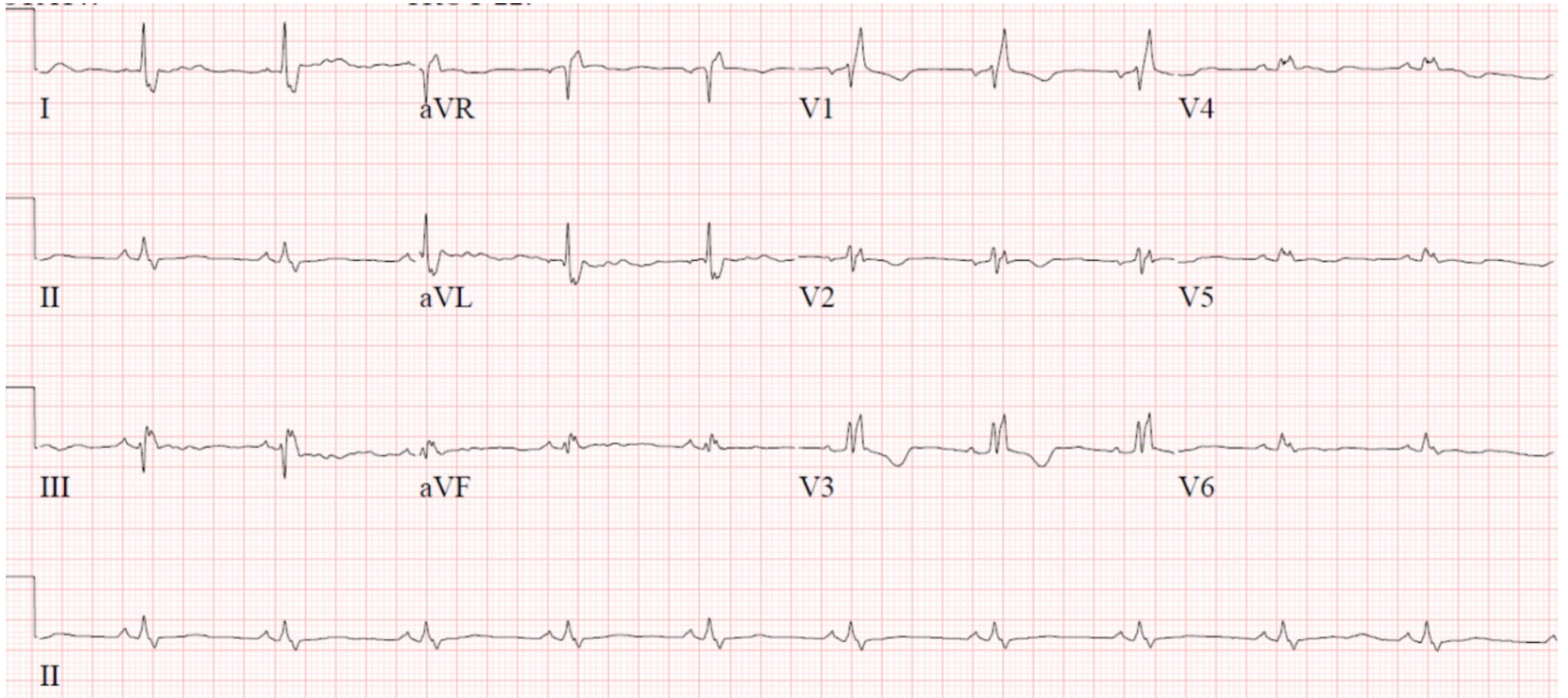
QRS Width

ST Segment

QT Interval

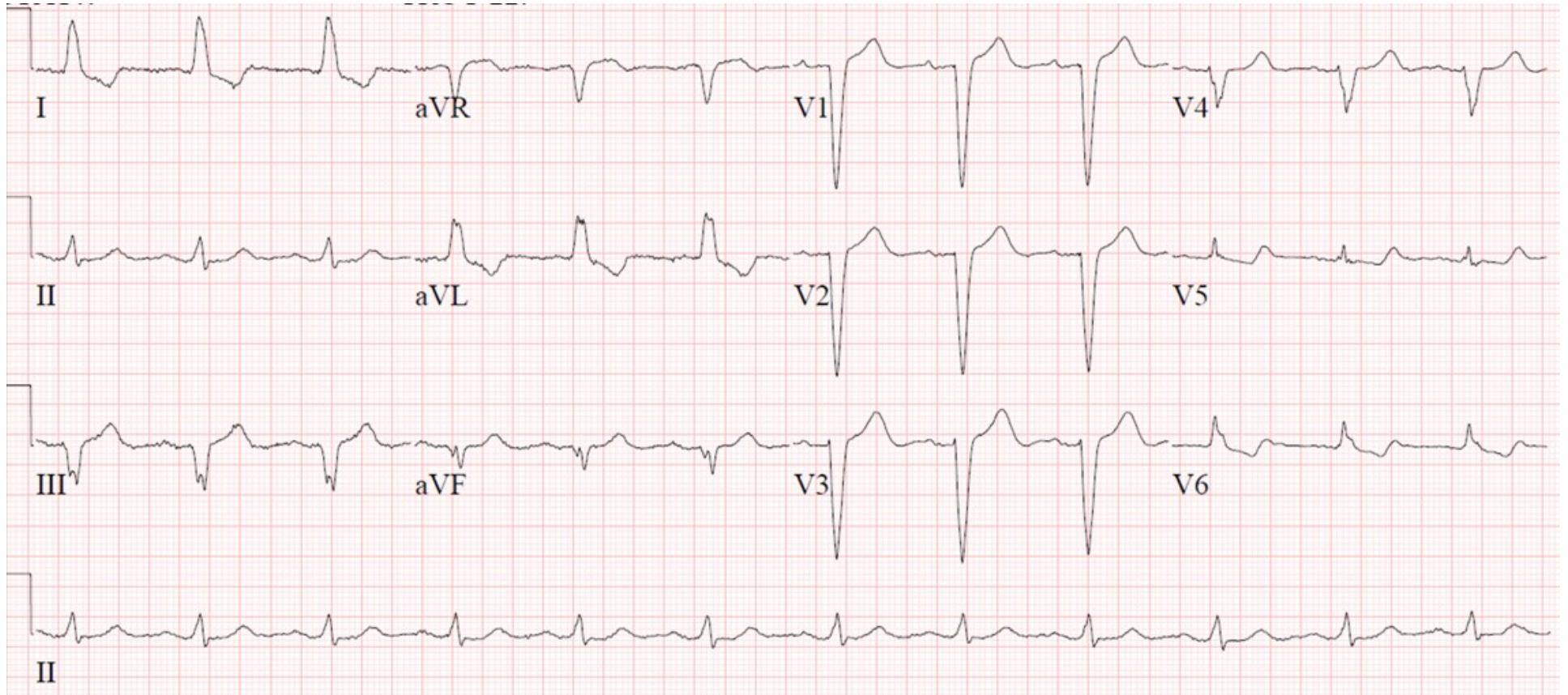
What rule has demonstrated the most sensitivity in assessing for ischemia in patient's with an EKG like this?

EKG 1—Unit 7, Case 25



EKG courtesy of Shanna Jones, MD

EKG 2—Unit 7, Case 25



EKG courtesy of Shanna Jones, MD