

Foundations EKG II - Unit 7, Case 28



72 y/o F with PMH of CAD with ischemic cardiomyopathy and an EF of 45% presents for syncope. On ED arrival she is asymptomatic.

HR: 70 BP: 127/82

RR: 12 O2 Sat: 98%

What is your interpretation of the EKG?

History/Clinical Picture

Rate

Rhythm

Axis

P Waves

Q/R/S Waves

T Waves

U Waves

PR Interval

QRS Width

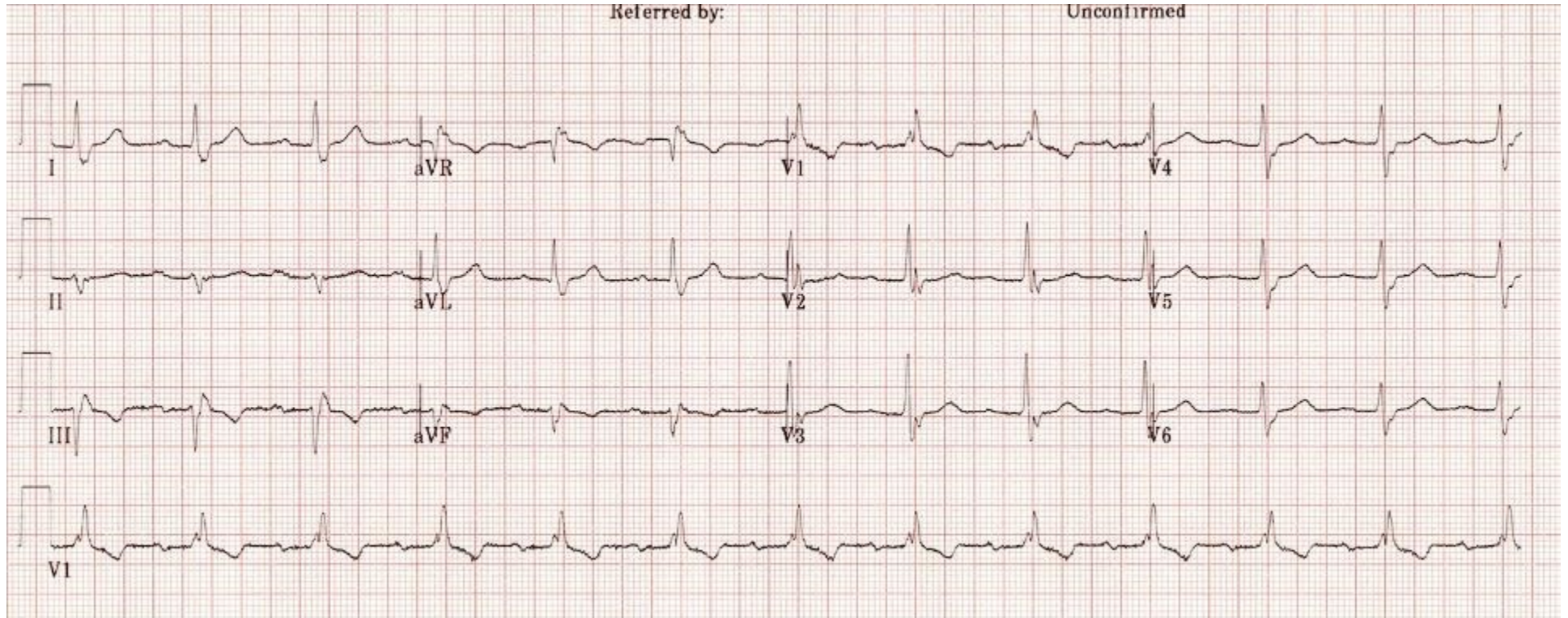
ST Segment

QT Interval

What unstable cardiac rhythm is this patient at risk of developing?

How should this patient be dispositioned and what is the appropriate management of this condition?

Triage EKG—Unit 7, Case 28



Courtesy of Edward Burns of [Life in the Fast Lane](#)

[Creative Commons License](#)