

Foundations EKG II - Unit 8, Case 31



46 y/o M with PMH of HTN presents with 45 minutes of substernal chest pain that began while playing golf.

HR: 70 BP: 170/100

RR: 20 O2 Sat: 98 %

What is your interpretation of the EKG?

History/Clinical Picture

Rate

Rhythm

Axis

P Waves

Q/R/S Waves

T Waves

U Waves

PR Interval

QRS Width

ST Segment

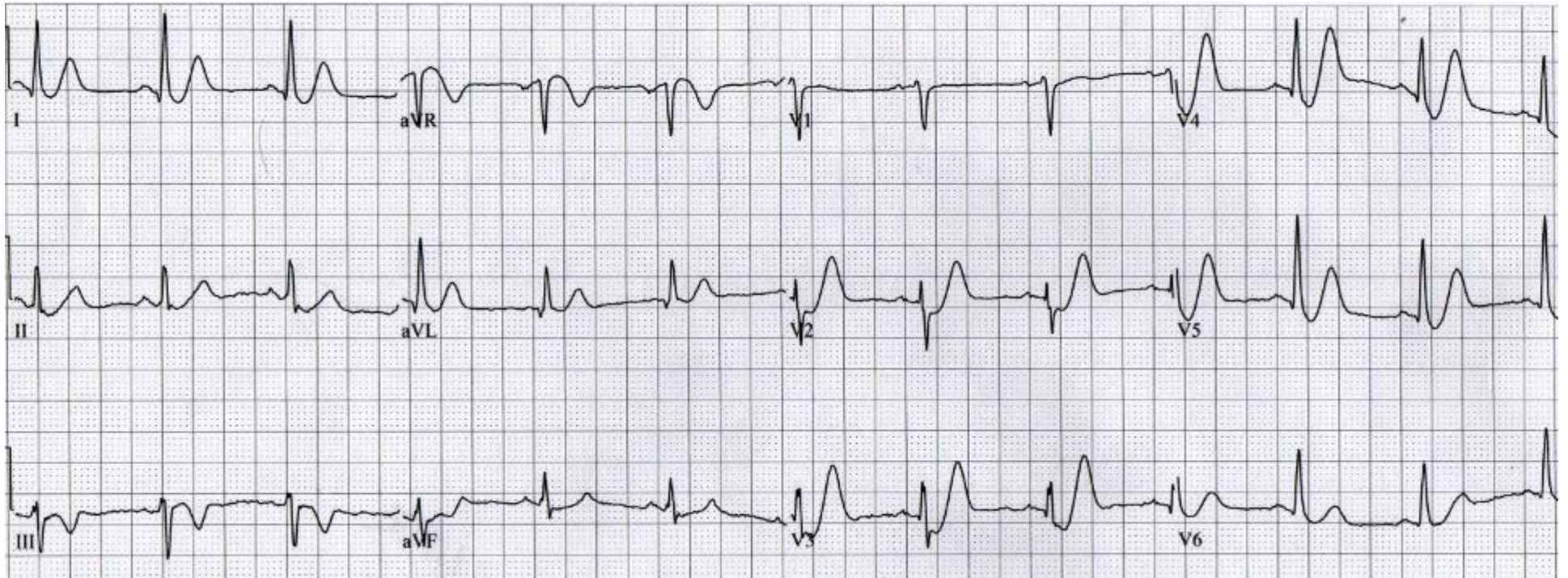
QT Interval

What is the eponym for the morphology of the ST-T complex seen in this EKG?

What does this ST-T morphology signify?

How should this patient be managed?

Triage EKG—Unit 8, Case 31



Courtesy of Edward Burns of [Life in the Fast Lane](#)

[Creative Commons License](#)